

Malaria pf/pan Rapid Test Kit

**Rapid Diagnostic kit for detecting infection with
P. falciparum and Plasmodium Species (P. falciparum /
P. vivax / P. malariae / P. ovale) Malaria Parasite in Human Whole Blood**

INTRODUCTION

Malaria is a serious, sometimes fatal, parasitic disease characterized by fever, chills, and anaemia and is caused by a parasite that is transmitted from one human to another by the bite of infected Anopheles mosquitoes. There are four kinds of malaria parasite that can infect human: Plasmodium falciparum, P. vivax, P. ovale, and P. malariae. As per WHO estimation, in 2012, there were an approximately 207 million cases and an estimated 627 000 deaths. Approximately 90% of all malaria deaths occur in sub-Saharan Africa, and 77% occur in children under 5 years. Malaria remains endemic in 104 countries, and, while parasite-based diagnosis is increasing, most suspected cases of malaria are still not properly confirmed, resulting in over-use of antimalarial drugs and poor disease monitoring. The use of antigen detecting rapid diagnostic tests (RDTs) is a vital part of malaria case management forming the basis for extending access to malaria diagnosis.

INTENDED USE

Malaria pf/pan Rapid Test Kit is a visual, rapid qualitative and sensitive solid phase immuno-chromatographic assay based on antigen detection and is as an aid in differential diagnosis of infection with HRP-2 (Histidine Rich Protein-2) specific P. falciparum and pLDH (Plasmodium Lactate Dehydrogenase) specific Plasmodium Species (P. vivax / P. malariae / P. ovale) in human whole blood specimens. The kit is intended for professional use and as a screening test and not to be used for carriers. All reactive samples should be confirmed by a supplemental assay like microscopic examination of thick smear and thin blood films. It assists trained competent users in detecting plasmodium infections.

PRINCIPLE (ANTIGEN-ANTIBODY REACTION)

Malaria pf/pan Rapid Test Kit is an immunoassay based on the "sandwich" principle. The conjugate contains colloidal gold conjugated to Pf specific monoclonal anti-HRP-2 antibody and monoclonal anti-pan specific pLDH antibody. The test uses monoclonal anti-Pf. HRP-2 antibody (test line F) and monoclonal anti-Pan specific pLDH antibody (test line P) immobilized on a nitrocellulose strip. The test sample is added to the device. On addition of assay buffer, the red blood cells get lysed. If the sample contains P. falciparum or P. vivax/P. malariae/P. ovale, the colloidal gold antibody conjugate complexes the Pf. specific HRP-2/Pan specific pLDH in the lysed sample. This complex migrates through the nitrocellulose strip by capillary action. When the complex meets the line of the corresponding immobilized monoclonal antibody on test lines, the complex is trapped forming a purplish pink band which confirms a reactive test result. Absence of a coloured band in the test region indicates a non-reactive test result. A red procedural control line should always develop at 'C' region to indicate that the test has been performed properly.

MATERIALS PROVIDED

Malaria pf/pan Rapid Test Kit contains following components to perform the assay:

S.	Component	25 Test Pack	50 Test Pack	100 Test Pack
1.	Test Card	25 Nos.	50 nos.	100 Nos.
2.	Assay Buffer	1 No. x 25 Tests	2 Nos. x 25 Tests	4 Nos. x 25 Tests
3.	Sample Dropper	1 Pack of 25 Nos.	1 pack of 50 Nos.	2 packs of 50 Nos.
4.	Instruction Manual	1 No.	1 No.	1 No.
5.	Swab & Sterile Lancet (Available on request)	25 Nos. each	50 Nos. each	100 Nos. Each

Optional material required: Calibrated micropipette capable of delivering 4µl sample.

KIT PRESENTATION

25 Test Pack	50 Test Pack	100 Test Pack
--------------	--------------	---------------

STORAGE AND STABILITY

Malaria pf/pan Rapid Test Kit should be stored at 4-30°C in the cool & driest area available. Expiry date on the kit indicates the date beyond which the kit should not be used. The kit should not be frozen & must be protected from exposure to humidity.

DESCRIPTION OF SYMBOLS USED

The following are graphical symbols used in or found on JC Group(China) diagnostic products and packing. These symbols are the most common ones appearing on medical devices and their packing. They are explained in more detail in the European Standard EN ISO15223-1:2016.

	Manufactured By		In vitro diagnostic medical device
	No. of tests		Consult Instructions for use
	Lot Number Batch Number		Temperature Limit
	Manufacturing Date		Caution, see instruction for use
	Expiry Date		Catalogue Number
	Do not use if package is damaged		Authorized Representative in the European Community
	Single use only		Keep away from sunlight
	Keep Dry		

WARNING & PRECAUTIONS FOR USERS

CAUTION: ALL THE SAMPLES TO BE TESTED SHOULD BE HANDLED AS THOUGH CAPABLE OF TRANSMITTING INFECTION. NO TEST METHOD CAN OFFER COMPLETE ASSURANCE THAT HUMAN BLOOD PRODUCTS WILL NOT TRANSMIT INFECTION.

- The use of disposable gloves and proper biohazardous clothing is STRONGLY RECOMMENDED while running the test.
- In case there is a cut or wound in hand, DO NOT PERFORM THE TEST.
- Do not smoke, drink or eat in areas where specimens or kit reagents are being handled.
- Tests are for in vitro diagnostic use only and should be run by competent person only.
- Do not pipette by mouth.
- All materials used in the assay and samples should be decontaminated in suitable disinfectant solution for 30-60 min. before disposal. They should be disposed off in accordance with established biosafety guidelines for handling & disposal of potentially infective material.
- Wash hands thoroughly with soap or any suitable detergent, after the use of the kit. Consult a physician immediately in case of accident or contact with eyes, in the event that contaminated material are ingested or come in contact with skin puncture or wounds.

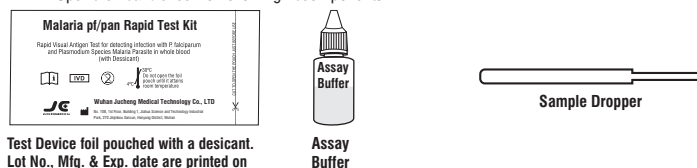
- Spills should be decontaminated promptly with Sodium Hypochlorite or any other suitable disinfectant.
- Assay Buffer contains Sodium Azide as a preservative. If these material are to be disposed off through a sink or other common plumbing systems, flush with generous amounts of water to prevent accumulation of potentially explosive compounds.
- Do not use the kit beyond the expiry date.
- Do not mix reagents from different batches.
- Do not open the foil pouch until it attains room temperature.
- Do not re-use the test device.
- Do not use any other buffer than the assay buffer supplied with this kit.
- Use separate sample dropper or pipette tips for each sample in order to avoid cross-contamination of samples which could cause erroneous results.
- Mark the test specimen with patient's name or identification number. Improper identification may lead to wrong result reporting.
- Follow the given test procedure and storage instructions strictly.
- Dispose off the used lancets in sharps box.
- The performance of Malaria pf/pan Rapid Test Kit has not been evaluated with P. malariae and P. ovale positive samples.**

SAMPLE / SPECIMEN COLLECTION AND STORAGE

- Collect the whole blood in a clean container (containing EDTA, citrate or heparin) by venipuncture. Fresh samples are preferred for testing as they perform best when tested immediately after collection. If samples are not immediately tested, they should be stored at 2-8°C for not more than 3 days, otherwise false / erroneous results may be obtained.
- Fresh blood from finger prick may also be used as a test sample.
- Haemolysed, lypaemic, ictric, clotted sample or sample with microbial contamination should not be used as can lead to erratic results.

BEFORE YOU START

- Open the kit and check for following kit components:

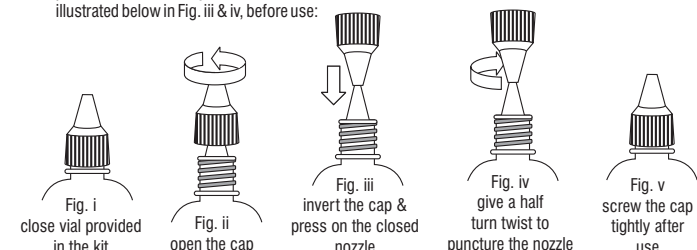


Test Device foil pouched with a desiccant.
Lot No., Mfg. & Exp. date are printed on back of the pouch.

Assay Buffer

Sample Dropper

- The Assay Buffer Solution provided in the kit has closed nozzle and screw cap with pin (outside). Before using Assay Buffer, keep the vial vertically straight and tap down gently on the working platform, so that Assay Buffer comes down at the bottom of the vial and orifice the closed nozzle, as illustrated below in Fig. iii & iv, before use:



TEST PROCEDURE

- Bring the complete kit and specimen to be tested to room temperature prior to testing.
- Remove the test card from the foil pouch prior to use and place it on a flat and dry surface. The test should be performed immediately after removing the test card from the foil pouch. **Do not use the card if desiccant is pink in color.**

- Label the test card with patient's name or identification number.
- Take 4µl anti-coagulated whole blood using the sample dropper upto the mark as shown in fig. (B).

Note: Sample taken above the mark as shown in fig. (a) and sample taken below the mark as shown in fig. (c) are wrong and will lead to erratic results.

OR

Use finger prick blood sample as described below.

FINGER PRICK SAMPLE COLLECTION:

- Wipe the complete finger tip with the alcohol swab as shown in Fig. (D). Wait until the finger has completely dried (minimum 30 seconds).
- Take the lancet and prick the side of the pulp (ball of the finger) with the lancet, perpendicular to the lines of the finger print as shown in Fig. (E).
- Make sure a well formed drop of blood is present on the tip of the finger.
- Take the sample dropper and collect 4µl of blood by dipping the tip of the sample dropper into the blood drop as shown in Fig. (f) and immediately place the tip of the sample dropper in the sample well "S". (Care should be taken that the blood sample does not clot & the transfer to the sample pad is immediate).

Fig. (a) Fig. (b) Fig. (c)



Fig. (d) Fig. (e)

Fig. (f)

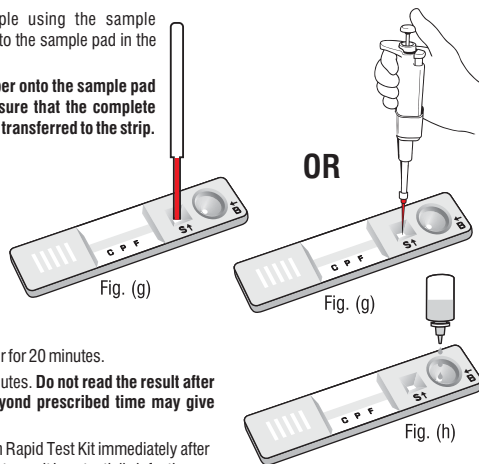
RT
20-30°C

- Add whole blood sample using the sample dropper/ micropipette onto the sample pad in the sample well 'S', fig. (g)

NOTE: Press the tip of the dropper onto the sample pad in the sample well "S" to ensure that the complete volume of whole blood has been transferred to the strip.

- Add 3 drops of the Assay Buffer in the buffer well 'B', fig. (h). Ensure **FREE FALLING OF DROPS** on the membrane, holding the vial/dropper vertically for proper volume. Screw cap the vial after use.

- Allow the reaction to occur for 20 minutes.
- Read the results at 20 minutes. **Do not read the result after 30 minutes. Reading beyond prescribed time may give false results.**
- Discard the Malaria pf/pan Rapid Test Kit immediately after reading results at 20 minutes as it is potentially infectious.



INTERPRETATION OF THE RESULTS

REACTIVE

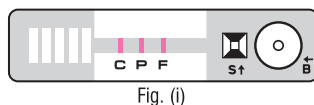


Fig. (i)

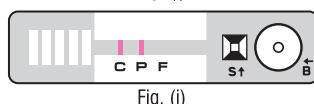


Fig. (j)



Fig. (k)

As shown in fig. (i), appearance of three purplish pink coloured lines one each in P.f. region (F), Pan region (P) & Control region (C) indicates that the sample is reactive for P. falciparum or mixed infection of P.f and P.v (or P. malariae, P. ovale).

As shown in fig. (j) appearance of two purplish pink coloured line one each at P & C region only indicates that the sample is reactive for P. vivax/ P. malariae / P. ovale only.

As shown in fig. (k) appearance of two purplish pink coloured line one each at F & C region only indicates that the sample is reactive for P. falciparum only. A difference of intensity in colour may occur between both the test lines ('P' & 'F') and between the test lines & control line depending on the concentration of pLDH & HRP-2 in the sample but this does not affect the interpretation of the results.

Depending on the concentration of pLDH & HRP-2 positive results may be observed within 60 seconds. However, to confirm a negative result the test result should be read only at 20 minutes. **Consider a faint test line also as a positive result.**

NON-REACTIVE



Fig. (l)

As shown in fig. (l), appearance of only one purplish pink coloured line at Control (C) region indicates that the sample is non-reactive for P. falciparum and other Plasmodium Species (P. vivax/ P. malariae/ P. ovale)

INVALID

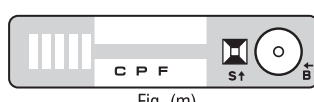


Fig. (m)



Fig. (n)

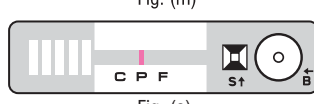


Fig. (o)

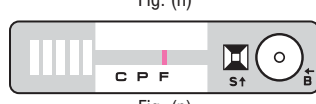


Fig. (p)

The test is invalid, if no control line appears after the completion of test, either with clear background or with complete pinkish/ purplish background fig. (m, n, o & p). **The test should be repeated using a new card.**

LIMITATIONS AND INTERFERENCES

- The test procedure, precautions and interpretation of results for this test must be strictly followed.
- This is only a screening test. All reactive samples must be confirmed with microscopy. As with all diagnostic tests, the test result must always be correlated with clinical finding. The results should be reported only after complying the mentioned procedure.
- Though the test is accurate in detecting HRP-2 specific to P. falciparum or pLDH specific to Plasmodium species (P. falciparum/ P. vivax/ P. malariae/ P. ovale), a low incidence of false results can occur. All reactive test results are to be interpreted within the epidemiological, clinical and therapeutic context. When it seems indicated, the parasitological techniques of reference should be considered (microscopic examination of the thick smear and thin blood films).
- Any modification to the test procedure and/ or use of reagents other than provided with the test kit will lead to invalid and/ or false test result.
- Since the HRP-2 persists for upto a fortnight even after successful anti-malarial treatment, a positive test result does not indicate a failed therapeutic response.
- In P. falciparum malaria infection, HRP-2 is not secreted in gametogony stage. Hence, in 'carriers', the HRP-2 test line (F) may be absent.
- The possibility of resistant strain of malaria should always be considered if the reaction of the test remains positive with the same intensity after 5-10 days post treatment.
- Patient with rheumatoid factors, anti-nuclear antibody or dengue may give false positive results.
- The product performance will be hampered or degraded if test kit is stored at low temperature (<2°C) or high temperature (>30°C).
- False negative results may be obtained in following conditions:

- Parasite density/ antigen concentration is below the detection limit of the test or analyte detected are not present during the stage of disease in which specimen is collected.
- No production of HRP-2 antigen in the specimen due to deletion of HRP-2 gene.

- In case of very faint or doubt for test band (F and/ or P), the test should be repeated using fresh device.
- Repeat the test in case of strong clinical evidence of malaria using fresh device.

PERFORMANCE CHARACTERISTICS OF Malaria pf/pan Rapid Test Kit

(i) WHO Evaluation:

The Malaria pf/pan Rapid Test Kit has been evaluated by WHO, Geneva using a panel of wild & cultured malaria positive sample and the results obtained are as follows:

	Panel Detection Score*		Specificity*
	Pf	Pv	
200 Parasites	84%	100%	—
2000 Parasites	100%	100%	—
Negative Samples	—	—	100%

*Reference: Malaria Rapid Diagnostic Test Performance: Results of WHO product testing of malaria RDTs: Round 5 (2013), Page:38.

Note: The above information is provided for the scientific community, It is not for commercial or promotional purpose.

(ii) In-house Evaluation:

Analytical Sensitivity: The test can detect parasitemia levels of ≥ 50 parasites per μ l of blood for P. falciparum (HRP-2), ≥ 100 parasites per μ l of blood for P. falciparum (pLDH) & P. vivax.

The Malaria pf/pan Rapid Test Kit has been evaluated in-house with malaria positive and negative clinical whole blood samples and compared with microscopic examination. The evaluation also included cross-reacting samples; Dengue, Rheumatoid factor, Leptospira, HIV, HCV, HBV, M. tuberculosis, Syphilis, Brucella, Scrub typhus positive samples. The results obtained are as follows:

Sample	Total no. of samples tested	Malaria pf/pan Rapid Test Kit		Sensitivity (%)	Specificity (%)
		Positive	Negative		
Malaria Negative	2100	1	2099	-	99.95
Cross-reacting sample	64	0	64	-	100
P. falciparum Positive	58	58	0	100	-
P. vivax Positive	105	105	0	-	100

Precision: Within-run and between-run precisions have been determined by testing 10 replicates of six specimens : two negative, two weak positive and two moderate positive. The C.V (%) of negative, weak positive and moderate positive samples were within 10% of the time.

LIMITED EXPRESSED WARRANTY DISCLAIMER

The manufacturer limits the warranty to the test kit, as much as that the test kit will function as an in vitro diagnostic assay within the limitations and specifications as described in the product instruction-manual, when used strictly in accordance with the instructions contained therein. The manufacturer disclaims any warranty expressed or implied including such expressed or implied warranty with respect to merchantability, fitness for use or implied utility for any purpose. The manufacturer's liability is limited to either replacement of the product or refund of the purchase price of the product and in no case liable to claim of any kind for an amount greater than the purchase price of the goods in respect of which damages are likely to be claimed. The manufacturer shall not be liable to the purchaser or third parties for any injury, damage or economic loss, howsoever caused by the product in the use or in the application thereof.

BIBLIOGRAPHY OF SUGGESTED READING

- Jamshaid Iqbal; et al. Journal of Clinical Microbiology, 37(1), 1999, 3644-3646.
- World Health Organization 2000. New perspectives malaria diagnosis. World Health Organization, Geneva, Switzerland.
- Piper R, et al. Am J. Trop. Med. Hyg., 60(1), 1999, 109-118.
- Moody A, Clinical Microbiological Review, 15(1), 2002, 66-78.
- Malaria Rapid Diagnostic Test Performance: Results of WHO product testing of malaria RDTs: Round 5 (2013)

in vitro diagnostic reagent, not for medicinal use

Wuhan Jucheng Medical Technology Co., LTD

No. 108, 1st Floor, Building 1, Jiahua Science and Technology Industrial Park, 270 Jinjinkou Suncun, Hanyang District, Wuhan

e-mail: sales@juchengmedical.com Internet: www.juchengmedical.com